

**NOTES:**

1. IF HOLES ARE AUGURED THEN MIN. 24" DIA. AUGER MUST BE USED.
2. MUST MEET BUILD AMERICA, BY AMERICA SPECIFICATIONS FOR FEDERAL PROJECTS.



**DIRECT BURIED POLE  
(FOR USE ON LOCAL STREETS  
AND MINOR COLLECTORS)**

PUBLIC WORKS ENGINEERING

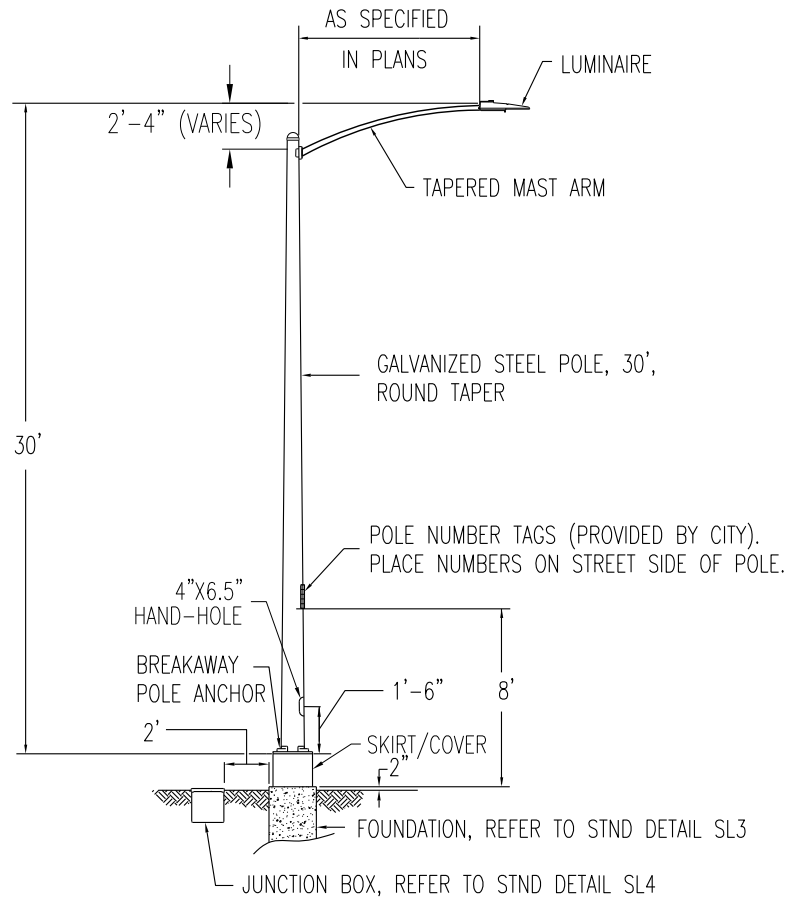
APPR. BY: PKR

DATE: 02.24

DRAWN BY: LD

DWG: SL1

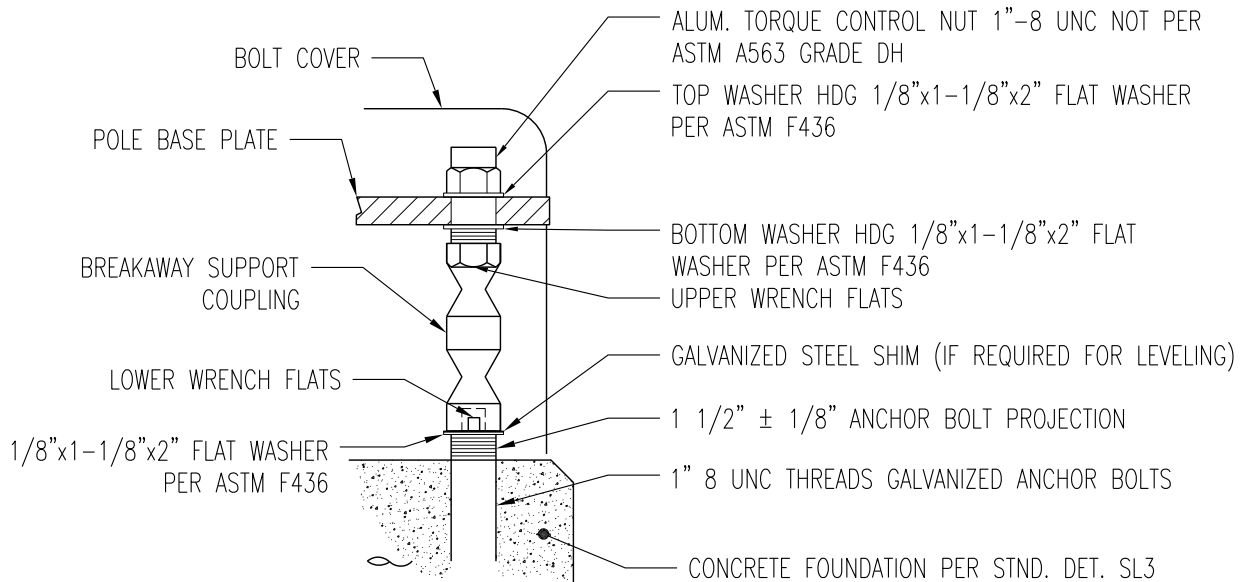
CAD FILE: 2015\_SL1\_11\_2024



### STANDARD STREET LIGHT WITH FOUNDATION

#### NOTES:

1. MUST MEET BUILD AMERICA, BY AMERICA SPECIFICATIONS FOR FEDERAL PROJECTS.



**BREAKAWAY POLE ANCHOR DETAIL**



## POLE & BREAKAWAY ANCHOR DETAIL

PUBLIC WORKS ENGINEERING

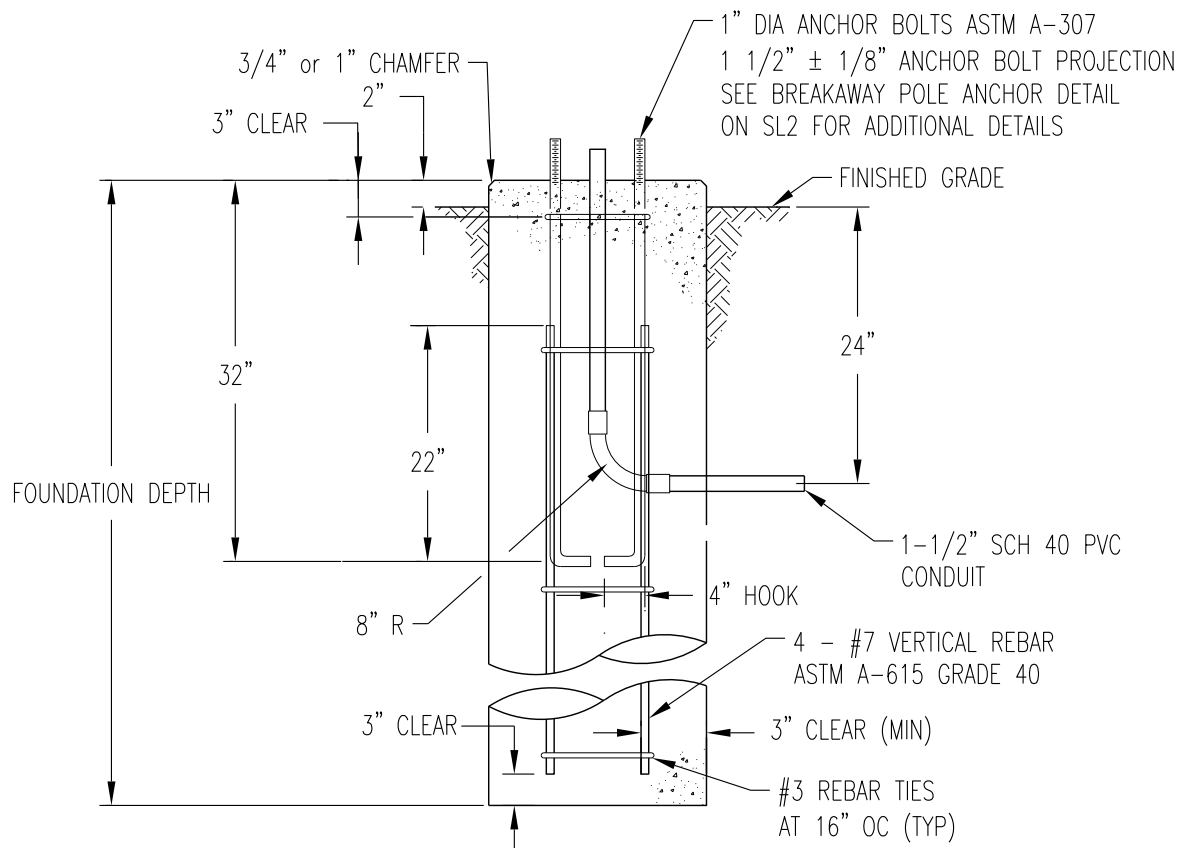
APPR. BY: PKR

DATE: 02.24

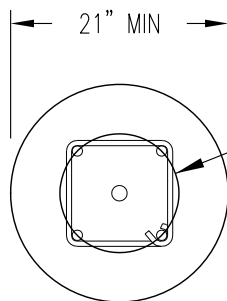
DRAWN BY: LD

DWG: SL2

CAD FILE: 2015\_SL2\_11\_2024



### FOUNDATION DETAIL



**FOUNDATION  
TOP VIEW**

NOTE:

BOLT CIRCLE AS  
REQUIRED FOR POLE,  
10.75" ± 0.25"

CONCRETE STRENGTH = 4000 PSI CONCRETE CLASS 4000P.  
CONCRETE STRENGTH = 2400 PSI PRIOR TO SETTING POLE.

POLE LENGTH (FEET)	MINIMUM FOUNDATION DEPTH IN FEET SEE SOIL TABLE		
	A	B	C
30	5'0"	6'6"	8'0"

NOTE:

1. FORMING MATERIALS (SONOTUBE) SHALL BE REMOVED FROM THE TOP OF THE FOUNDATION TO SIX INCHES BELOW FINISHED GRADE.
2. SOIL BELOW FOUNDATION TO BE UNDISTURBED.
3. SOIL TYPE AS DETERMINED BY THE ENGINEER OR AS SHOWN IN PLANS. 8' MINIMUM FOUNDATION DEPTH SHALL BE USED UNLESS PLANS INDICATE OTHERWISE OR SOIL EVALUATION IS PROVIDED BY THE ENGINEER.

SOIL TYPE	CLASS OF MATERIAL (UNIFORM BUILDING CODE)
A	GOOD-COMPACT WELL-GRADED SAND AND GRAVEL. HARD CLAY WELL-GRADED FINE AND COARSE SAND (ALL DRAINED SO WATER WILL NOT STAND)
B	AVERAGE-COMPACT FINE SAND MEDIUM CLAY COMPACT SANDY LOAM LOOSE COARSE SAND AND GRAVEL (ALL DRAINED SO WATER WILL NOT STAND.)
C	POOR-SOFT CLAY CLAY LOAM POORLY COMPACTED SAND CLAYS CONTAINING LARGE AMOUNTS OF SILT (WATER STANDS DURING WET SEASON)



## CONCRETE FOUNDATION DETAILS

PUBLIC WORKS ENGINEERING

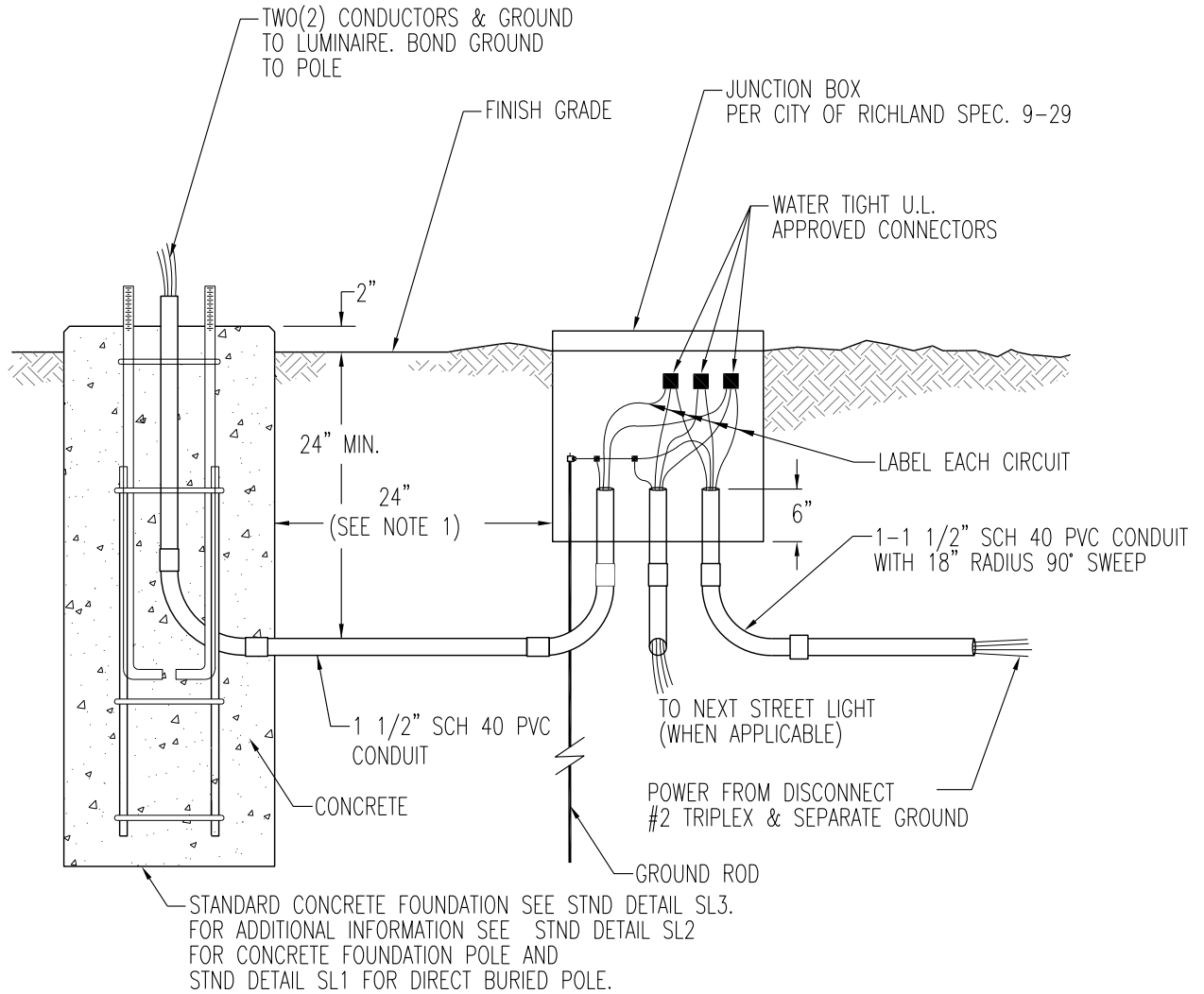
APPR. BY: PKR

DATE: 11.21

DRAWN BY: LD

DWG: SL3

CAD FILE: 2015\_SL3\_11\_2021



NOTES:

1. SET JUNCTION BOX AT 24" FROM STREET LIGHT FOUNDATION OR AS APPROVED BY ENGINEER. SET BOX AT AN ELEVATION SUCH THAT THE TOP OF THE BOX COVER IS APPROXIMATELY 2" ABOVE FINISHED GRADE UNLESS BOX IS TO BE SURROUNDED BY ASPHALT OR CONCRETE. SET BOX LEVEL WITH AND PARALLEL TO STREET.
2. SWEEP CONDUIT UP INTO JUNCTION BOX A MINIMUM OF 6". INSTALL BELL ENDS OR BUSHINGS ON ALL EXPOSED CONDUIT ENDS IN JUNCTION BOX.
3. ALLOW SUFFICIENT SLACK IN CONDUCTORS SUCH THAT SPLICES MAY BE REMOVED A MINIMUM OF 36" FROM SPLICE BOX.
4. A HEAVY DUTY LID SHALL BE USED FOR SUCH OCCASIONS WHERE THE JUNCTION BOX IS LOCATED IN VEHICULAR TRAFFIC BEARING AREAS SUCH AS DRIVEWAYS OR SIDEWALKS.



## JUNCTION BOX & FOUNDATION DETAILS

### PUBLIC WORKS ENGINEERING

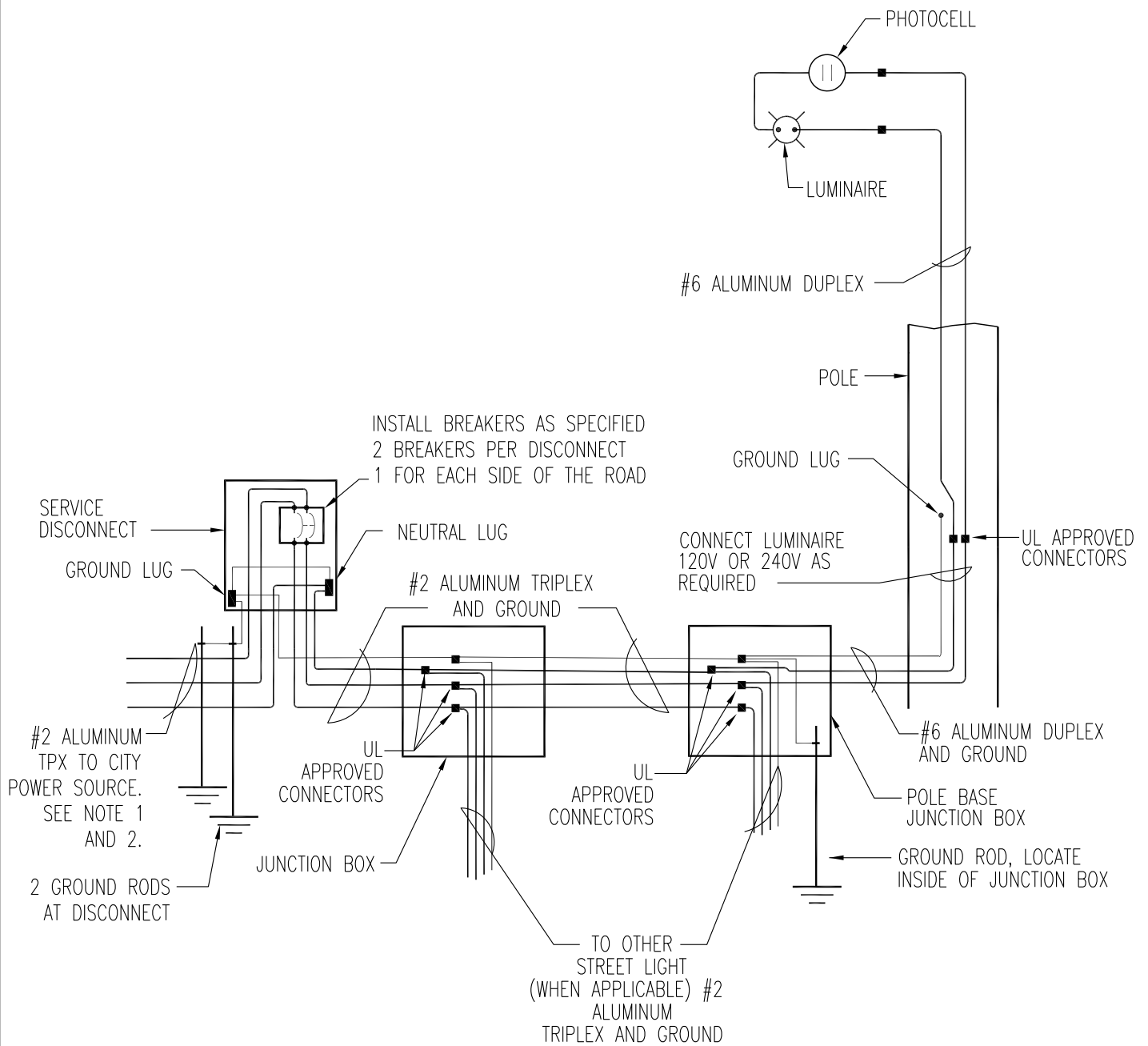
APPR. BY: PKR

DATE: 11.21

DRAWN BY: LD

DWG: SL4

CAD FILE: 2015\_SL4\_11\_2021



#### NOTES:

1. IF POWER SOURCE IS OVERHEAD POWER LINE EXTEND CONDUIT TO WITHIN 1' OF CITY POLE AND LEAVE APPROXIMATELY 50' OF #2 ALUM TPX HANGING OUT OF CONDUIT FOR CITY CONNECTION. IF POWER SOURCE IS A PAD MOUNT TRANSFORMER OR UNDERGROUND JUNCTION BOX, EXTEND CONDUIT INTO VAULT OR JUNCTION BOX WITH CITY OVERSIGHT AND LEAVE 5' OF #2 ALUM TPX FOR CITY CONNECTION.
2. CITY OF RICHLAND TO PROVIDE POWER SOURCE CONNECTIONS.



## WIRING DIAGRAM

#### PUBLIC WORKS ENGINEERING

APPR. BY: PKR

DATE: 07.17

DRAWN BY: LD

DWG: SL5

CAD FILE: 2015\_SL5\_07\_2017