

ELECTRIC EQUIPMENT CLEARANCES

ATTENTION ENERGY SERVICES DEVELOPERS, CONTRACTORS, AND HOMEOWNERS:

We need your help in keeping our work area safe around Richland Energy Services power poles and distribution equipment. Plants, trees, rock, rock walls, decorative fences, wood, piles of dirt, or other materials on, against, or near electrical equipment is not allowed. High voltage electrical equipment such as ground level transformers, switch cabinets, or tops of underground vaults must be kept free of obstructions for two basic reasons - for access by linemen during emergencies and for cooling or drying air circulation to prevent equipment failure. This is required by Richland Municipal Code 14.32.020 and Washington Administrative Code 296-45-485 15.

Overhead poles and equipment must be kept free of posters, nails, vines, etc., that may cause linemen serious injury while climbing as required by the Revised Code of Washington 70.54.090.

The City recognizes that developers, contractors and homeowners at times want to beautify or use these spaces. This is not objectionable as long as equipment clearance problems or safety hazards do not exist. Therefore, all landscaping will need to be in accordance with these guidelines. If these guidelines are violated the City's Energy Services Department will make the necessary corrections and bill the property owner any associated costs.

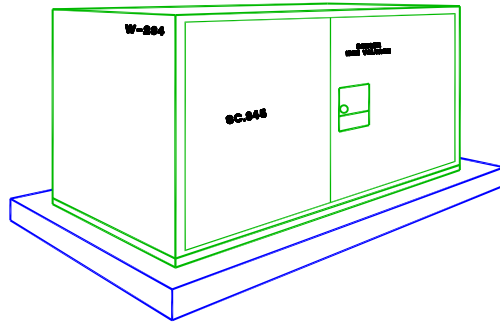
In order to maintain clearances and prevent hazardous conditions, the City's Energy Services crews may cut shrubbery or remove all obstructing materials to the limits of the right-of-way or limits of public property at any time. The City does not license the developer, contractor, or property owner to use or in any way take responsibility for use of these spaces.

The attached drawings identify the necessary clearances required to insure proper operation and safety. If you have any questions, please email us at energyservices@ci.richland.wa.us or call (509) 942-7403.

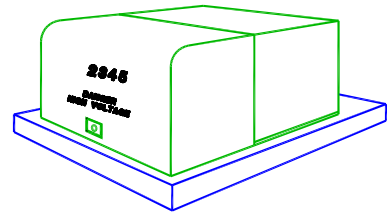
OPERATING CLEARANCES:

Fencing within operational clearance: Fences may cross operating space. They must not stop cooling or drying air movement. All fence parts must be easy to remove, disassemble, lift out or open as with gates. If gate or panel uses a centering pole, the pole must also be removable.

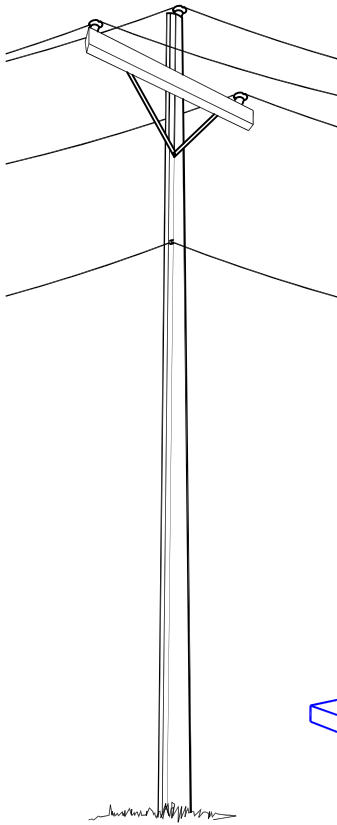
Access: Access must be provided into operating space. Access will be along right-of-way or public property in which case shrubbery or fencing, etc., may be removed, or access may be through private yard when so requested by owner. Access through private yard is often the preferred method of entry because it calls for the least damage to fencing or shrubbery.



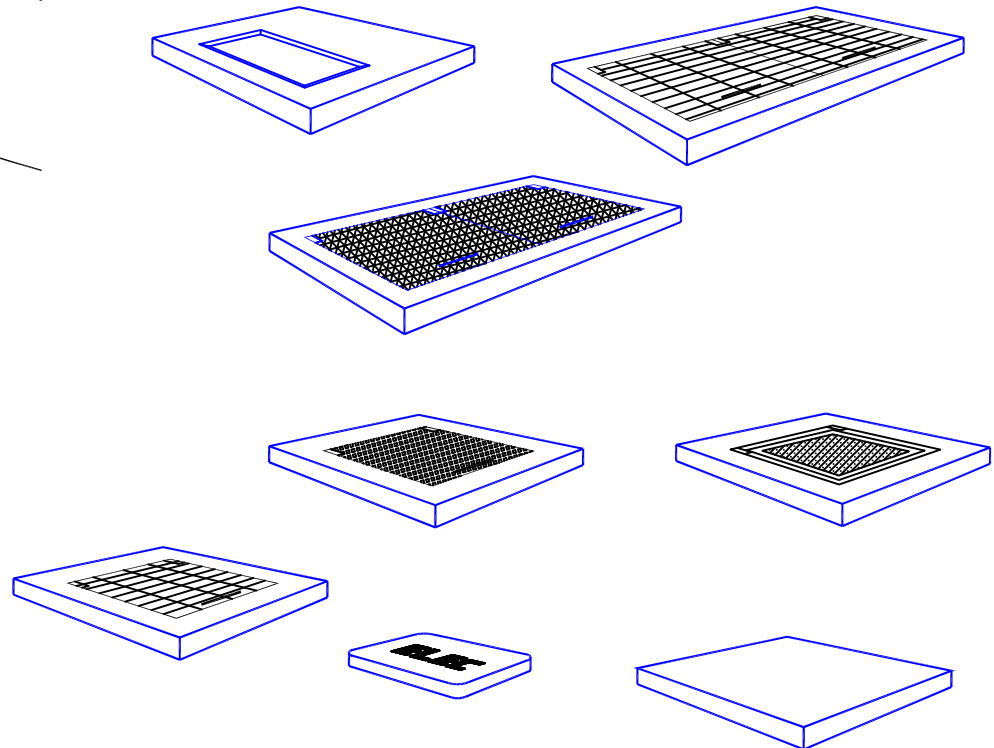
SWITCH CABINET



TRANSFORMER



POWER POLE



VARIOUS VAULT COVERS

THESE ARE EXAMPLES OF HIGH VOLTAGE ELECTRICAL EQUIPMENT, COVERS OR POLES THAT MAY BE FOUND ON YOUR PROPERTY. THEY ARE A FUNCTIONING PART OF THE ELECTRICAL POWER SYSTEM AND ARE IMPORTANT TO QUALITY ELECTRICAL SERVICE.

ADEQUATE CLEARANCE MUST BE MAINTAINED TO ALL EQUIPMENT REPAIR AND OR EMERGENCY ACCESS.

DRAWN BY: NYBY

APPRD. BY: -

REV #: 0

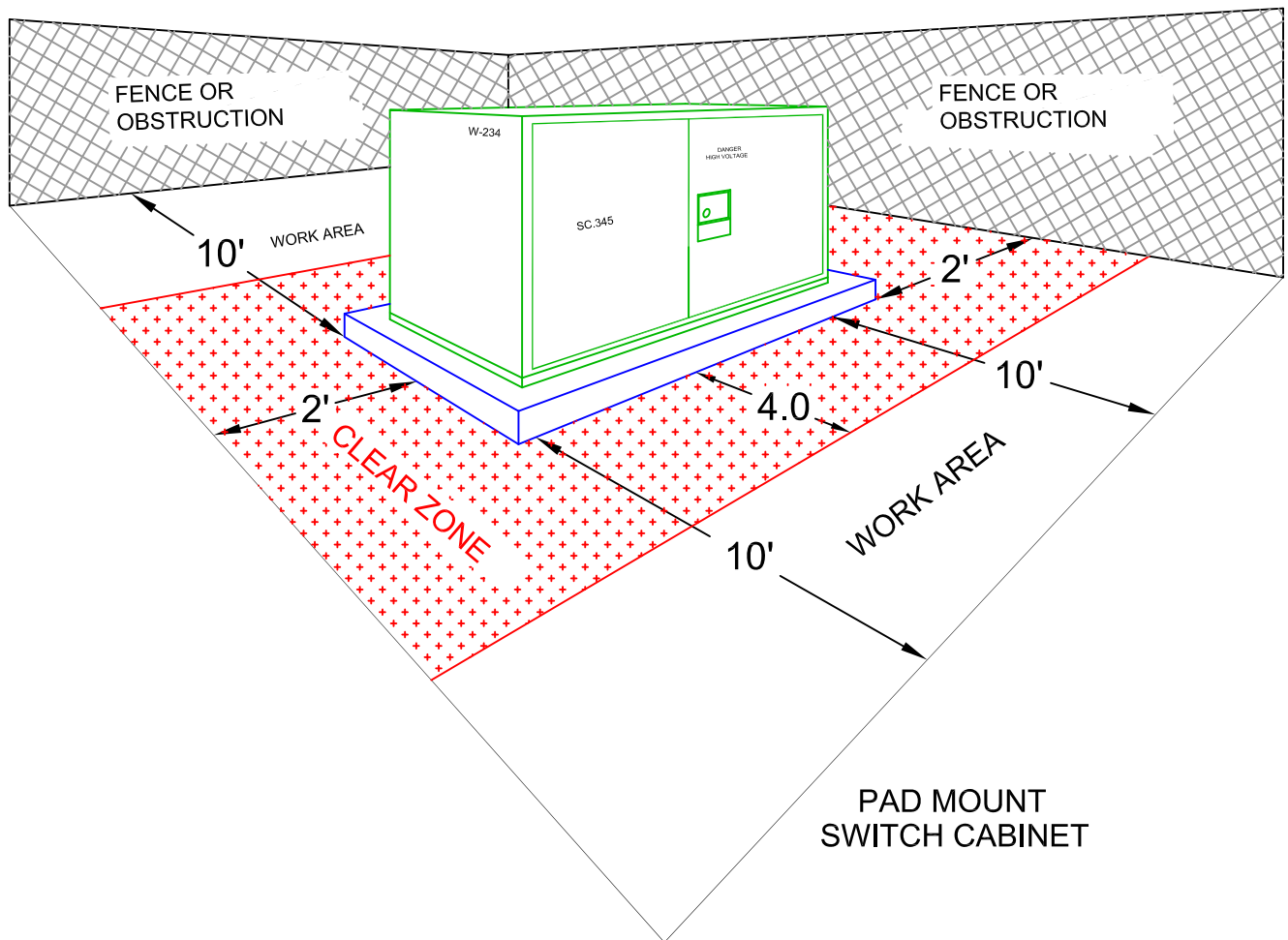
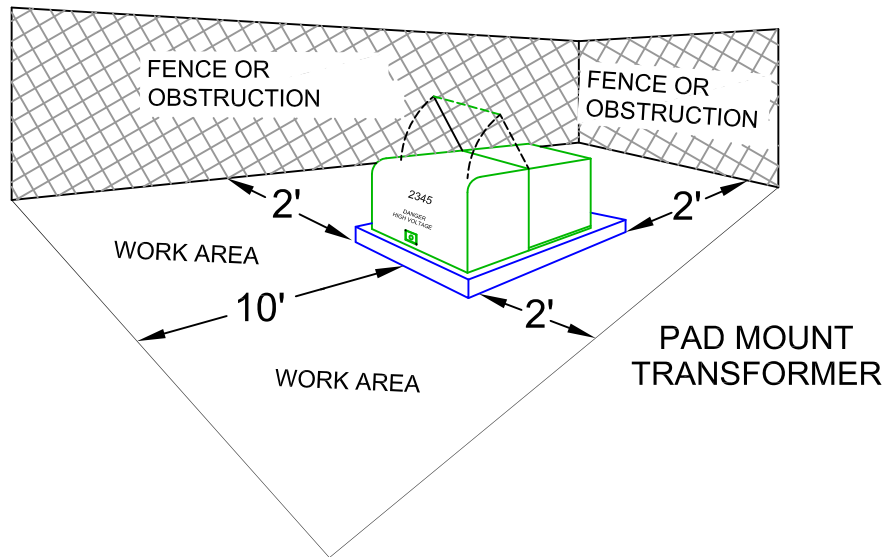
ELECTRICAL EQUIPMENT IDENTIFICATION



**ENERGY
SERVICES**

05/03/18

P091
SHT: 1 OF 3



DRAWN BY: NYBY

APPRD. BY: -

REV #: 0

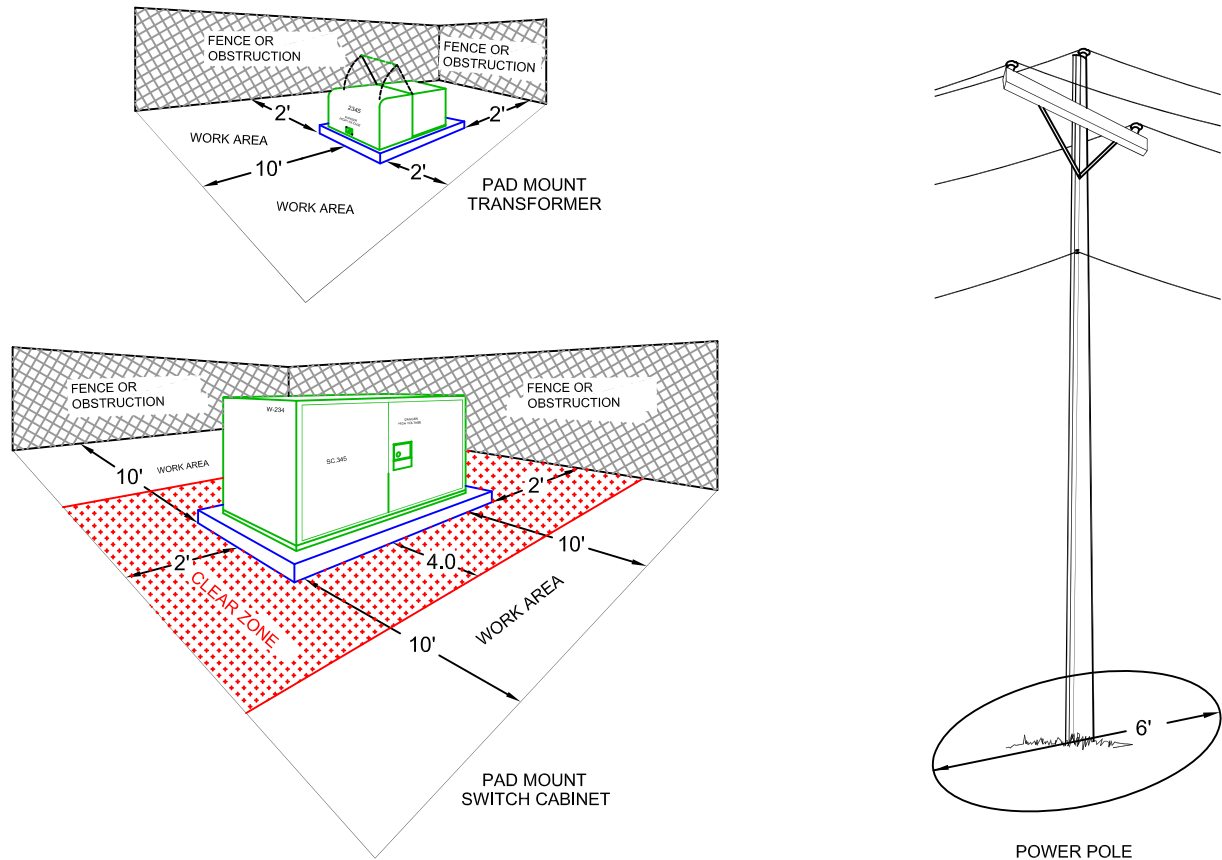
ELECTRICAL EQUIPMENT CLEARANCES



**ENERGY
SERVICES**

05/03/18

P091
SHT: 2 OF 3



ELECTRIC UTILITIES ARE INSTALLED WITHIN CITY PUBLIC RIGHT OF WAY (R/W) OR IN A PRIVATE EASEMENT, NORMALLY 10 FT IN WIDTH. THE EASEMENT ALLOWS THE UTILITY A PATH FOR EGRESS AND INGRESS TO FACILITIES.

ON PUBLIC LAND OVER WHICH SECONDARY EASEMENTS OR LEASES HAVE BEEN GRANTED, EXISTING ELECTRICAL CABLES AND EQUIPMENT ARE CONSIDERED TO BE CONTAINED WITHIN A 10 FT EASEMENT AND SHALL PROTECTED AS IF THE EASEMENT EXISTED.

THE AREA WITHIN THE ELECTRIC UTILITY EASEMENT BOUNDARY CAN HAVE LANDSCAPING AND/OR PAVING EXCEPT IN AREAS OCCUPIED BY EQUIPMENT.

BUILDINGS AND STRUCTURES ARE PROHIBITED WITHIN EASEMENTS.

GRADING AND/OR CHANGES TO THE PROFILE OF LAND WHERE UTILITIES ARE INSTALLED MUST HAVE THE APPROVAL OF THE CITY'S CHIEF ELECTRICAL ENGINEER.

CLEAR ZONES ARE AREAS AROUND UTILITY EQUIPMENT LOCATED WITHIN THE EASEMENT OR R/W THAT ARE USED BY UTILITY PERSONNEL WHEN WORKING ON THE EQUIPMENT. THE CLEAR ZONE AREA SHOULD NOT BE USED FOR FOR ACTIVE TRAFFIC OR PARKING, AND SHOULD BE FREE OF VEGETATION THAT COULD IMPACT A UTILITY WORKER. THE EDGE OF THE CLEAR ZONE COULD BE DEFINED BY BOLLARDS, OR CURBING SUCH AS IN A PARKING LOT.

WORK ZONES ARE AREAS IN FRONT OF EQUIPMENT THAT INCLUDES SOME OF THE CLEAR ZONE AND AN ADDITIONAL AREA THAT ALLOWS THE UTILITY THE ABILITY TO MANEUVER THE EQUIPMENT. THE WORK ZONE SHOULD BE FREE FROM ALL OBSTRUCTIONS THAT CAN NOT BE READILY REMOVED.

THE WORK ZONE IS TO BE A MINIMUM OF 1FT WIDER THAN THE EQUIPMENT OR VAULT IT ENCOMPASSES AND EXTENDS A MINIMUM OF 2 FT AWAY FROM EQUIPMENT ON THE NONE OPERATING SIDE, AND EXTENDS A MINIMUM OF 10 FT FROM THE OPERATING SIDE OF EQUIPMENT.

DRAWN BY: NYBY

APPRD. BY: -

REV #: 0

ELECTRICAL EQUIPMENT CLEARANCES

R ENERGY
SERVICES

05/03/18

P091
SHT: 3 OF 3